

# What is HIE? a Federal and State Perspective

**Lori L. Hack Object Health LLC**

**[www.objecthealth.com](http://www.objecthealth.com)**

# Health Information Exchange (HIE) Defined

*The movement of data between health information systems for the purposes of:*



Patient  
Communication



Provider  
Communication

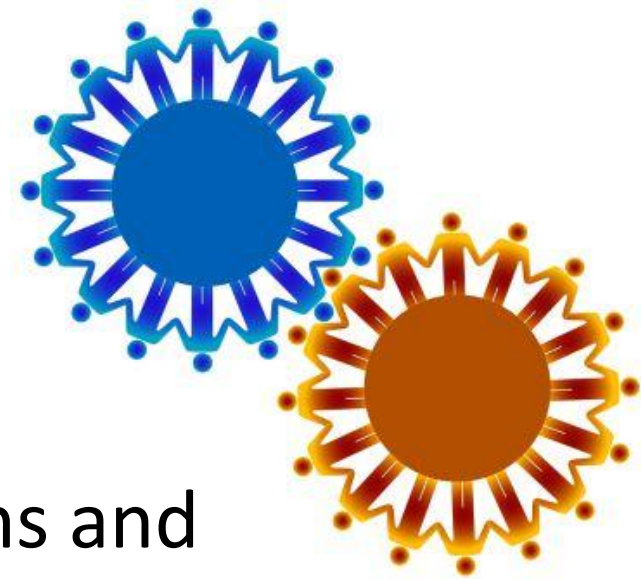


State  
Communication

# Health Information Exchange (HIE) vs Health Information Organization (HIO)

- Health information exchange describes an *action*
  - Provider orders a lab test
  - Lab result is delivered to Provider
  - Provider tells the patient the results
- Health information organization describes a business entity that operates the technology that supports the action(s)
  - Coordinates the different systems that collect and send information

# Interoperability...



- ...Is the ability of diverse systems and organizations to work together (inter-operate).
- Health Interoperability
  - HIO runs technology and policies to move data
  - HIE moves data on request or per automated rules
  - Providers can concentrate on developing care plans
  - Patients are freed from managing paper records

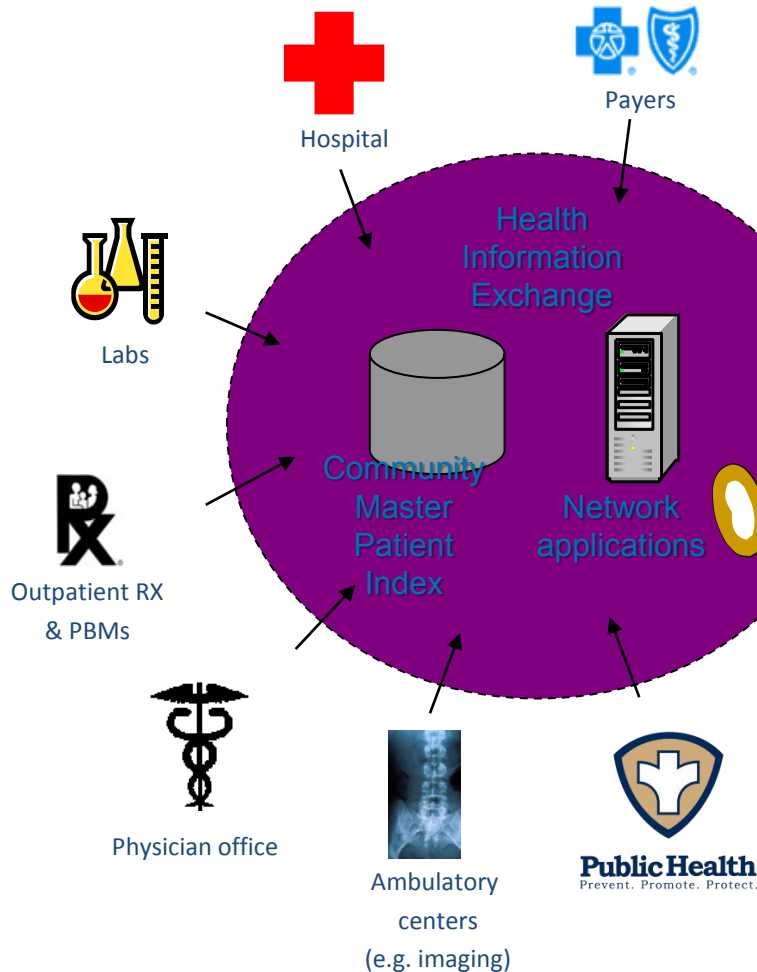
# So... Why is Interoperability Hard?

- Healthcare standards are problematic
  - A lot of “options”.
- Imagine if your laptop did not plug into the power outlet at the airport, and you needed an adapter for every hotel chain in the world

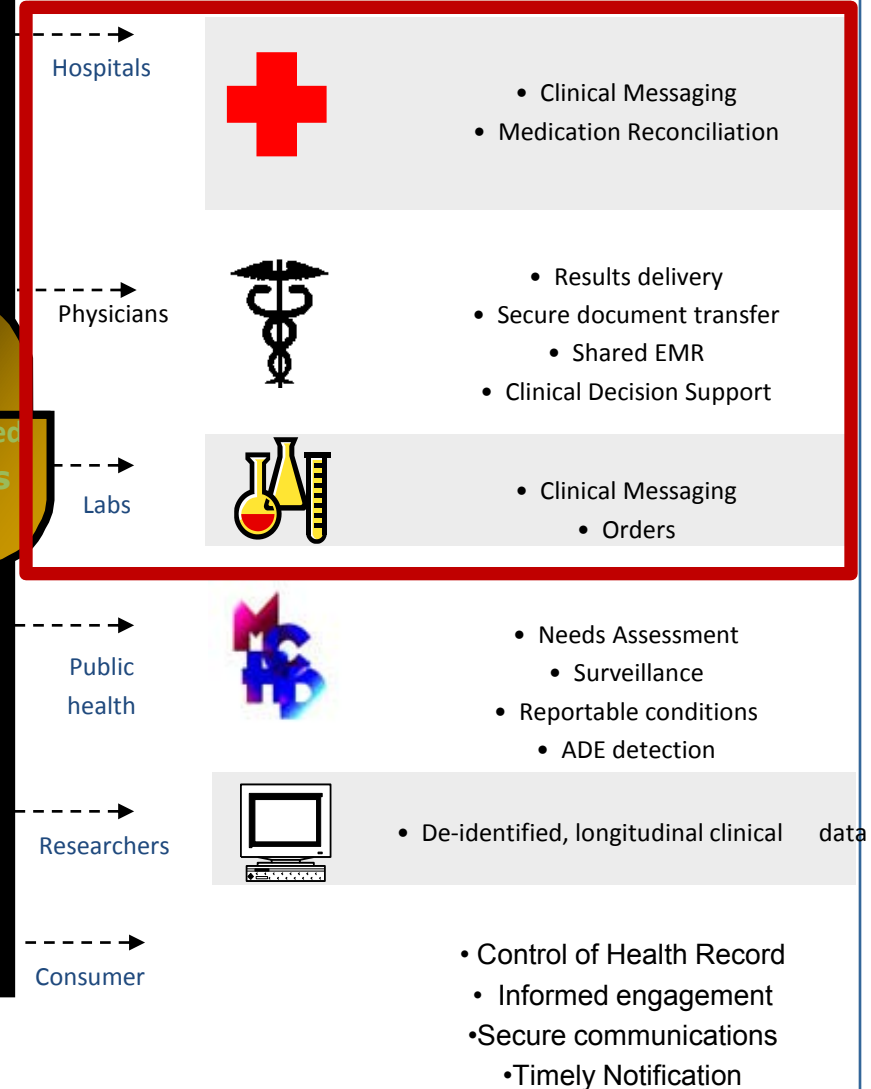


# Health Information Exchange

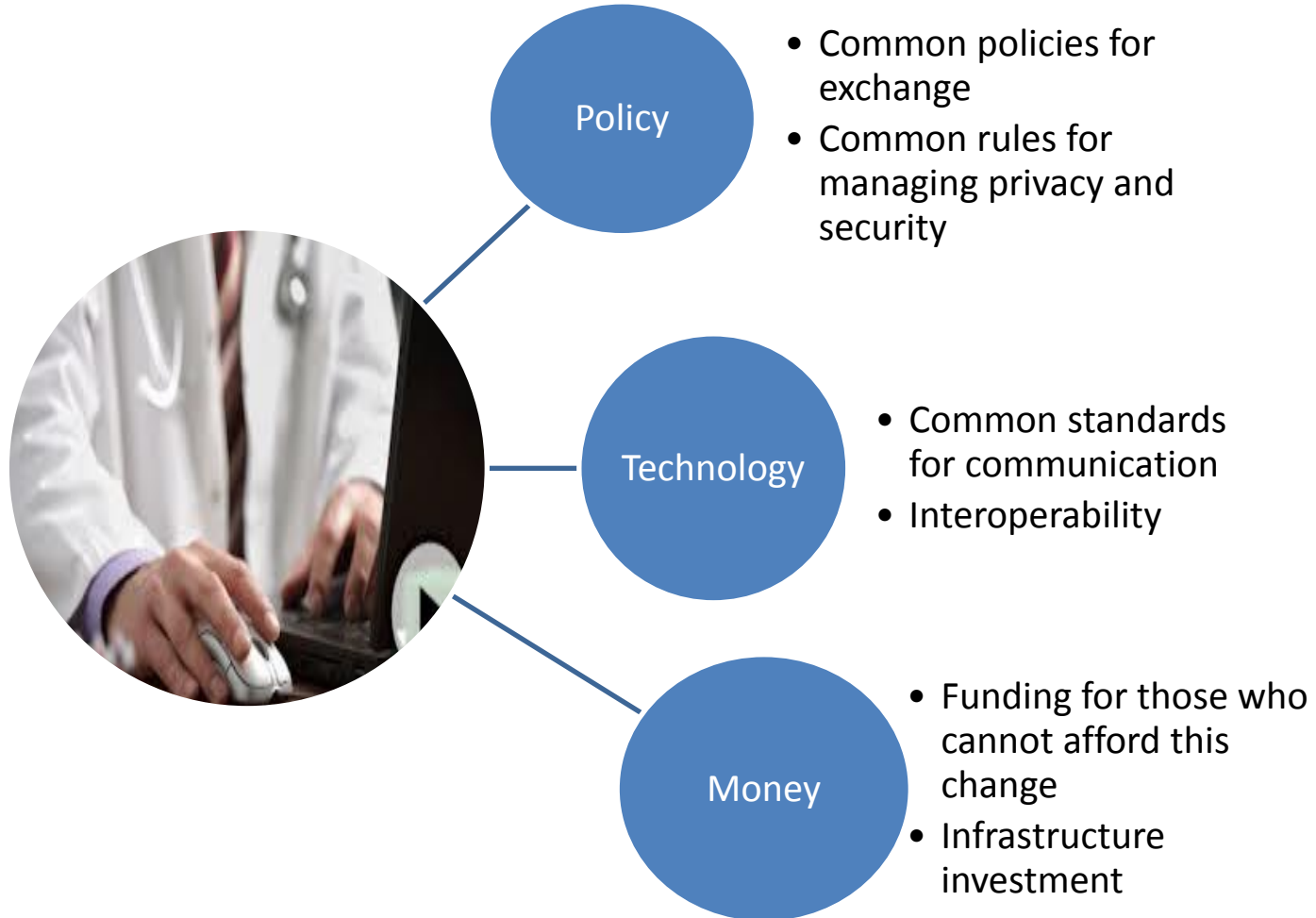
## Health Information Exchange



## Services



# Health Information Exchange Requirements for California



# (Another) Call to Action



“We’ll be on our way to computerizing all of America’s medical records, which won’t just eliminate inefficiencies, save billions of dollars, and create tens of thousands of jobs – but will save lives by reducing deadly medical errors.”

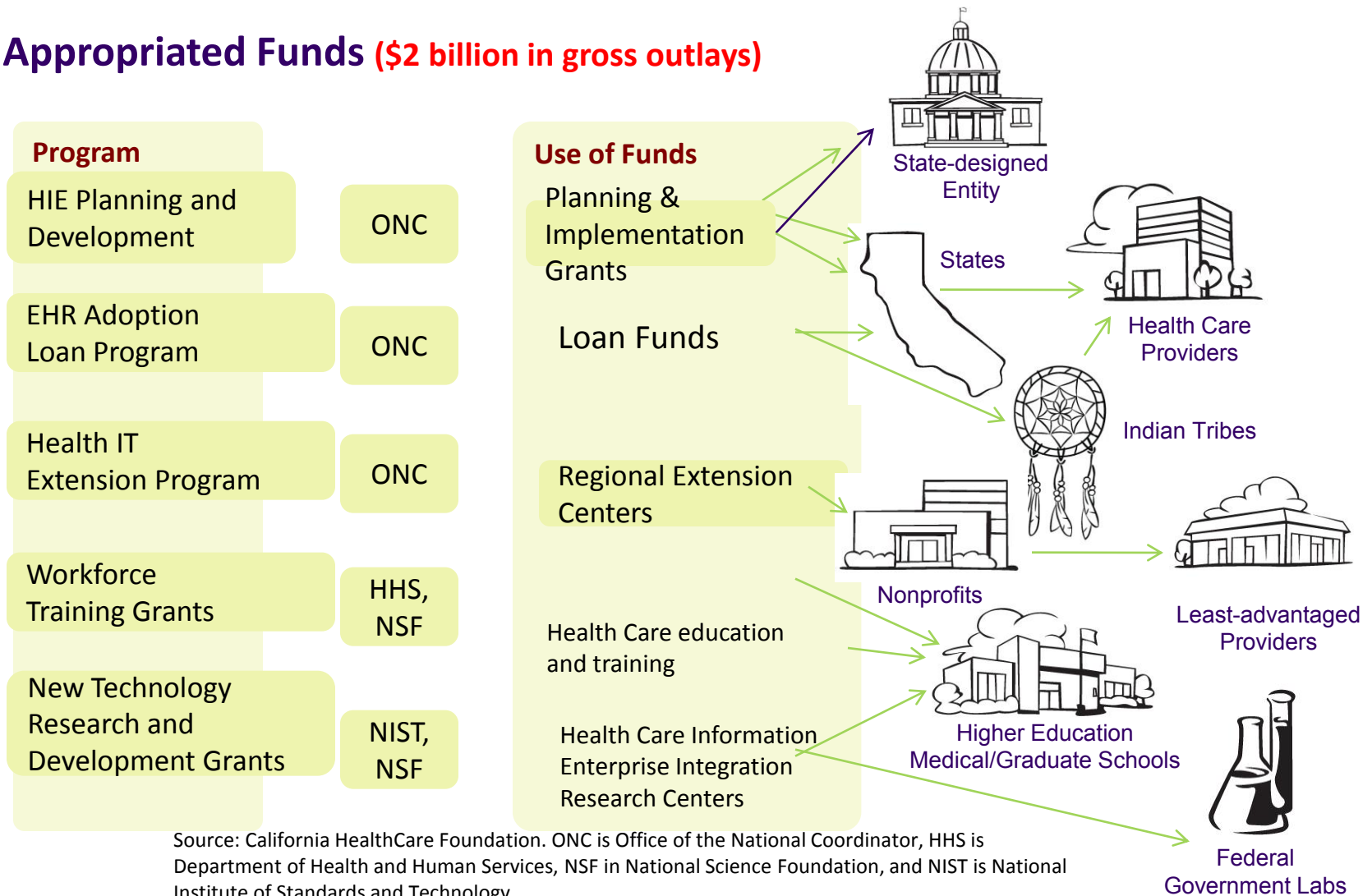
— President Barack Obama  
February 4, 2009



# Stimulus Funds from 2009 American Recovery and Reinvestment Act

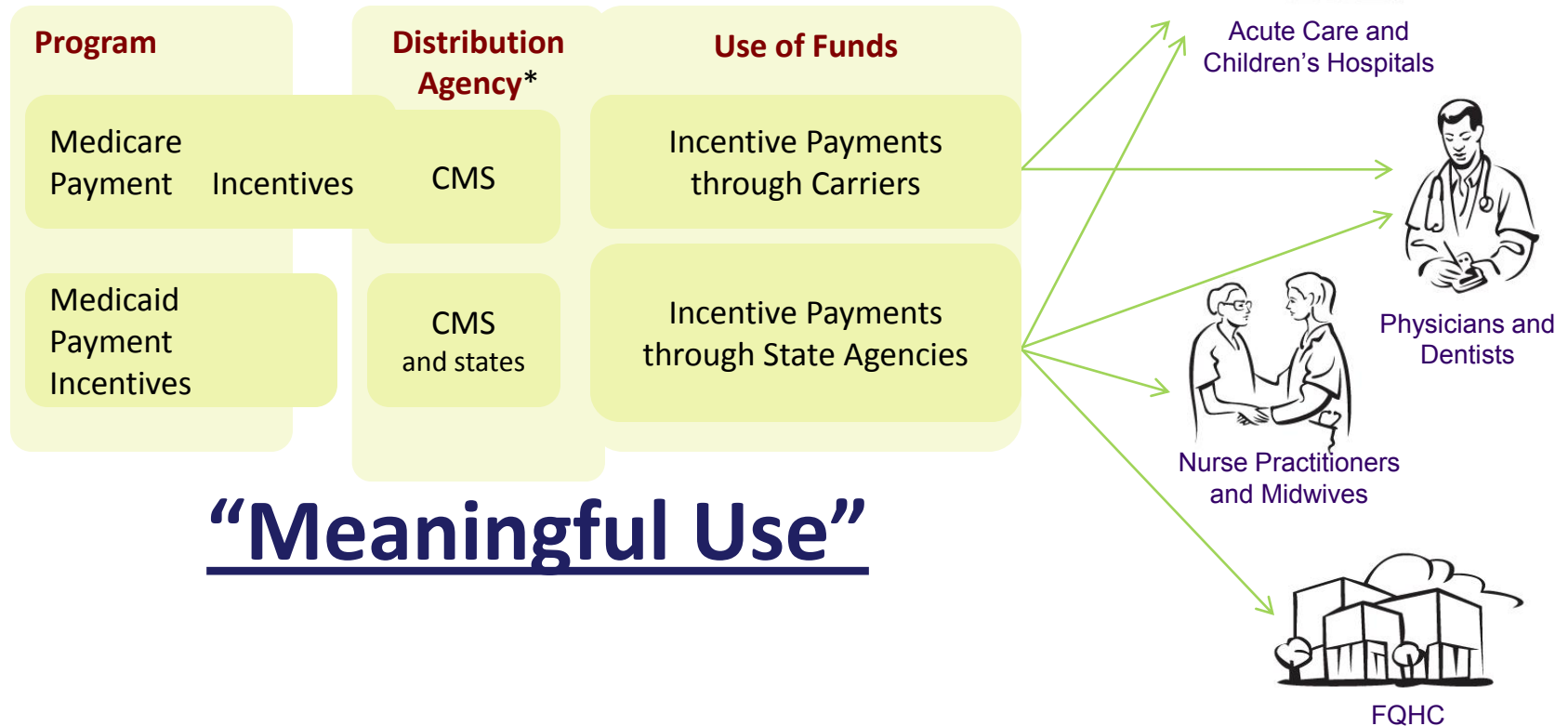
9

## Appropriated Funds (\$2 billion in gross outlays)



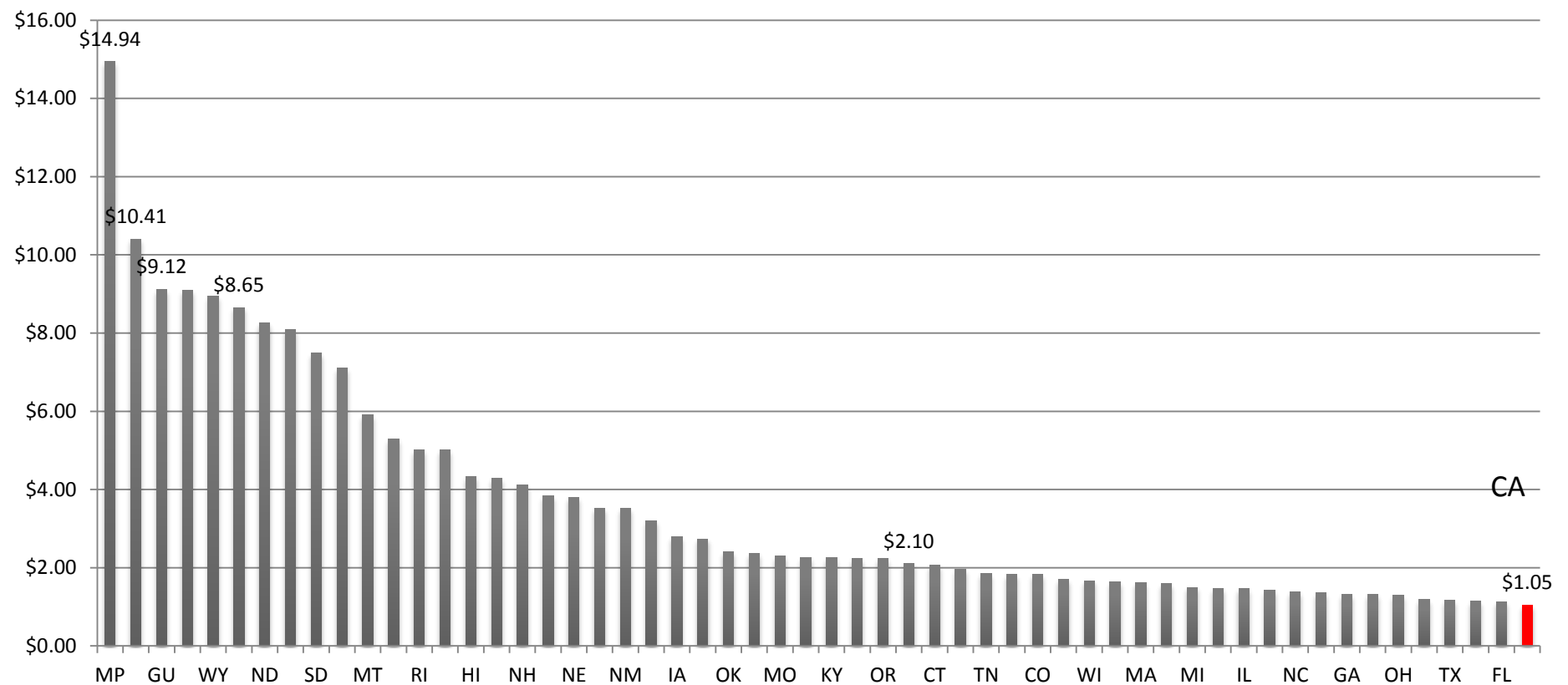
# Funding Flows for – Medicare/Caid

## Entitlement Funds (\$34 billion in gross outlays)



# Stimulus \$ for HIE in CA - \$38M

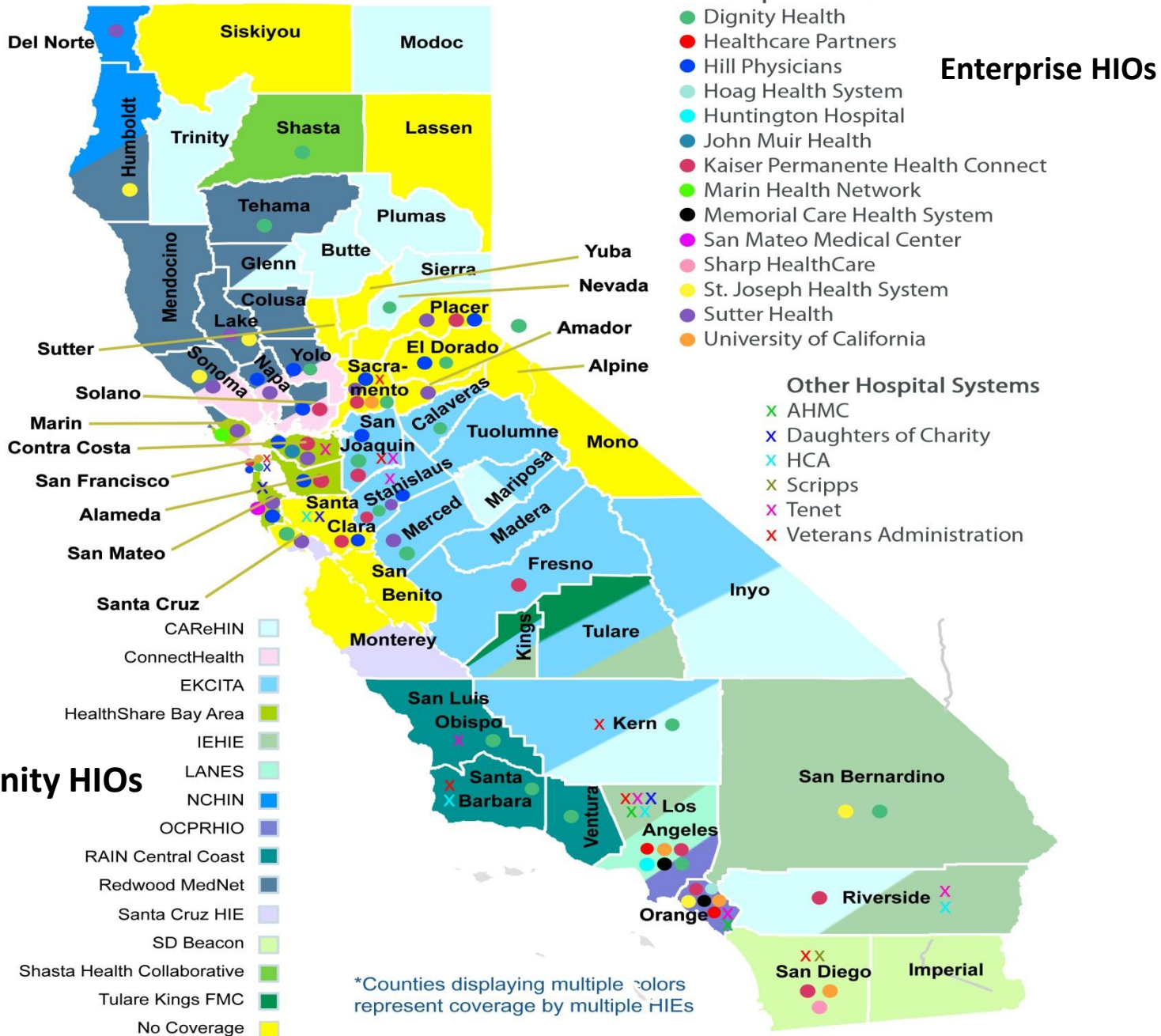
## HIE \$ per Capita



<http://healthit.hhs.gov/portal> and <http://www.census.gov/popest/states/> Respectively

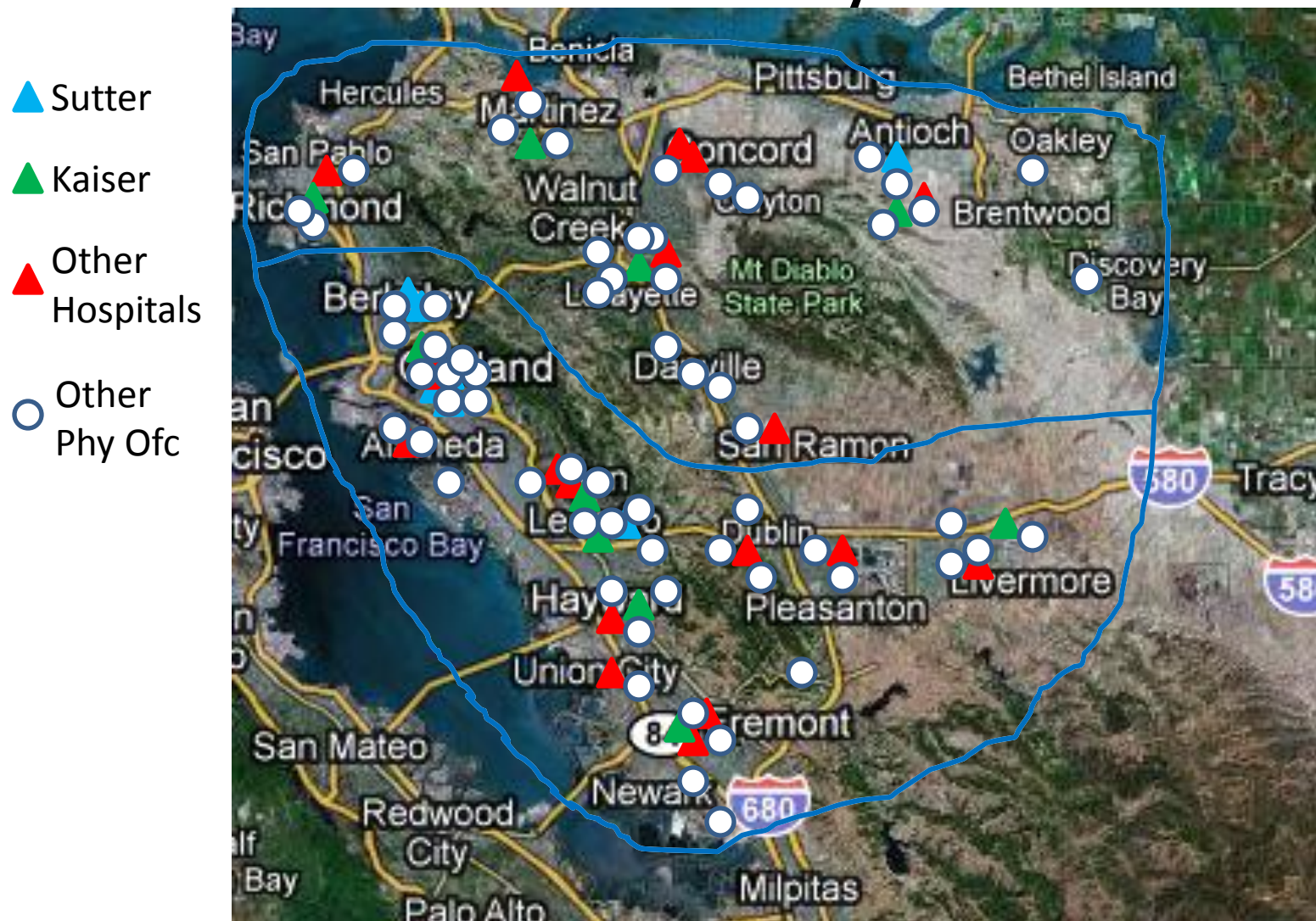
# Self-projected HIO locations by end of 2013

## Community HIOs





# So... Why create HIE for Alameda County?



# Securely Sharing Health Information Electronically is

- a matter of life and death
- not really easy (ok, it is hard)
- critical to bringing health care into the 20<sup>th</sup> century
- happening at every level of care delivery in our County!



# FOR FURTHER INFORMATION PLEASE CONTACT:

LORI HACK, [LORI.HACK@OBJECTHEALTH.COM](mailto:LORI.HACK@OBJECTHEALTH.COM)  
415-260-6277, [WWW.OBJECTHEALTH.COM](http://WWW.OBJECTHEALTH.COM)